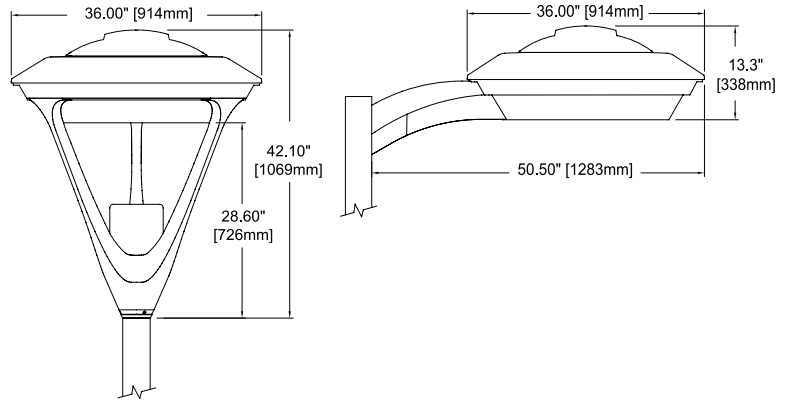


OPTRA Area Lighter

250W – 1000W High Pressure Sodium, Metal Halide and Pulse Start Metal Halide



Dimensions



FEATURES

- **RUGGED CONSTRUCTION:** Die-cast aluminum housing constructed with stainless steel hardware ensures added durability and strength over typical outdoor fixtures. Designed with dust tight seals to keep contaminants and water out, preventing corrosion and maintaining the luminaries light efficiency for longer periods without maintenance.
- **ARCHITECTURAL STYLE:** Streamlined design provides functional performance, sustainable design and an aesthetically pleasing luminaire to compliment your architectural design. Style combined with tool-less maintenance access to the lamp and ballast, saves time and money.
- **QUAD OPTICS SYSTEM:** Captures, controls and maximizes light utilization and energy use through four unique optical components. The primary path reflector is carefully positioned to guide light with precise control, the inverse conical lens allows more light to pass through versus conventional flat glass designs, a vertical lamp orientation utilizes the optimum lamp position and the collimating refractor focuses light where it is needed most. Optra's Quad Optics creates exceptional uniformity; low glare and extreme reach with both symmetrical and asymmetrical distributions.
- **BALLAST:** Remote from the optical assembly to provide a cooler running and longer ballast life. High power factor with starting temperatures as low as -29°C (-20°F) for Metal Halide, -34°C (-30°F) for Pulse Start Metal Halide, and -40°C (-40°F) for High Pressure Sodium. Lamp Current Crest Factor (CCF) does not exceed 1.8 and ballast has Class H, 180°C (356°F) rated insulation. Tool-less access is standard for ease of installation and service.
- **MOUNTING:** Constructed for single person installation. Field installed arm mount with integral ballast tray assembly is made of die-cast aluminum and bolts easily to a 4" to 5" OD round or 4" to 6" square pole. Post-top model allows fixture mounting to a 2-3/8" OD X 4" vertical tenon on a 4", 5", 6" round or square pole.
- **IP RATING:** Complies with IP65
- **IES CLASSIFICATION RATING:** The Optra Area Lighter is a Night-Friendly lighting option that meets the IESNA full cut-off criteria.
- **EPA:** Effective Projected Area
 - Arm Mount = 1.38 sq. ft.
 - Post Top = 2.07 sq. ft.
- **FINISH:** Standard Finish is Satin Aluminum Duraplex II™ Electrostatic Powder Finish; optional colours available.
- **APPROVAL:** cUL Approved; Wet Location Listed
- **WARRANTY:** 3 year limited warranty

Fixture & Lamp DATA:

Wattage	Lamp Type	Ballast Type	Arm Weight (lbs./kg.)	Post-Top Weight (lbs./kg.)
High Pressure Sodium (S)				
250W	E18	CWA	66.7 / 30.3	72.8 / 33.1
400W	E18	CWA	69.2 / 31.5	75.3 / 34.2
1000W	BT37 (Dual arc)	CWA	83.7 / 38.1	89.8 / 40.8
Metal Halide (M)				
250W	BT28	CWA	65.7 / 29.9	71.8 / 32.6
400W	BT28	CWA	67.7 / 30.8	73.8 / 33.5
1000W	BT37	CWA	76.7 / 34.9	82.8 / 37.6
Pulse Start Metal Halide (P)				
250W	BT28	CWA	65.2 / 29.6	71.3 / 32.4
350W	BT28	CWA	66.7 / 30.3	77.8 / 33.1
400W	BT28	CWA	67.7 / 30.8	73.8 / 33.5
450W	BT37	CWA	69.7 / 31.7	75.8 / 34.5
750W	BT37	CWA	72.7 / 33.1	78.8 / 35.8
1000W	BT37	CWA	76.7 / 34.9	82.8 / 37.6



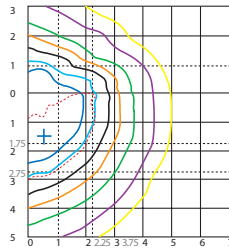
Ordering Guide (example: OPM250AS-1W)

Series	Light Source	Lamp Wattage ¹	Distribution	Mounting	Voltage	Options	Finish
OP	P: Pulse Start M: Metal Halide S: High Pressure Sodium	250: 250W 350: 350W 400: 400W 450: 450W 750: 750W 1000: 1000W	A: Asymmetric S: Symmetric	S: Surface Arm Mount to 4" to 5" OD Round Pole or 4" to 6" Square Pole PTTR: Post Top Tenon Mount to 4" round pole PTTR-5: Post top Tenon Moun to 5" round pole PTTR-6: Post top Tenon Mount to 6" round pole PTTS-4: Post Top Tenon Mount with transition for 4" Square pole PTTS-5: Post Top Tenon Mount with Transition for 5" Square pole PTTS-6: Post Top Tenon Mount with Transition for 6" Square pole	1: 120V 4: 277V 6: 347V T: Tri-Tap (120/277/347) ²	See Option Chart on p. 735	Blank: Satin Aluminum standard W: White B: Black TBK: Textured Black GN: Textured Green GR: Gray DB: Dark Bronze <i>Custom colors avail. consult factory.</i>

¹ P (250, 350, 400, 450, 750, 1000); M (250, 400, 1000); S (250, 400, 1000)

² Only available for arm mount model

1000 watt Pulse Start, Asymmetric Distribution



Candela Table

Hori. Angle	Vert. Angle				
	0	45	90	135	180
0	2696	2696	2696	2696	2696
5	3355	2797	2750	2023	1645
15	3853	3267	2726	1734	1542
25	5020	3787	3360	2053	1651
35	7295	7078	3833	2403	1414
45	11046	12513	5933	2569	1000
55	13393	14654	5871	1343	875
65	25250	24117	11612	917	717
75	8860	8115	4573	581	446
85	822	620	578	348	209
90	0	0	0	0	0

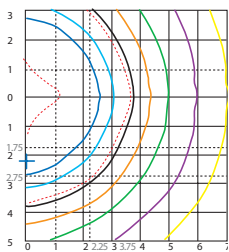
Characteristics

IES Classification	Type IV
Longitudinal Classification	Very Short
Cutoff Classification	Full-Cutoff
Total Rated Lamp Lumens	115000
Maximum Candela	28518.63
Maximum Candela Angle	20H 60V
Maximum Candela at 90 degrees Vertical	0
Maximum Candela at 80 degrees Vertical	2361.203
Downward Total Efficiency	31.9%

Flux Distribution

	Lumens	Percent of Lamp
Downward Street Side	30906.3	26.9
Downward House Side	5721.4	5.0
Downward Total	36627.7	31.9
Upward Street Side	0	.0
Upward House Side	0	.0
Upward Total	0	.0
Total Flux	36627.7	31.9

1000 watt Pulse Start, Symmetric Distribution



Candela Table

Hori. Angle	Vert. Angle				
	0	45	90	135	180
0	2696	2696	2696	2696	2696
5	3355	2797	2750	2023	1645
15	3853	3267	2726	1734	1542
25	5020	3787	3360	2053	1651
35	7295	7078	3833	2403	1414
45	11046	12513	5933	2569	1000
55	13393	14654	5871	1343	875
65	25250	24117	11612	917	717
75	8860	8115	4573	581	446
85	822	620	578	348	209
90	0	0	0	0	0

Characteristics

IES Classification	Type V
Longitudinal Classification	Very Short
Cutoff Classification	Full-Cutoff
Total Rated Lamp Lumens	115000
Maximum Candela	27751.02
Maximum Candela Angle	0H 65V
Maximum Candela at 90 degrees Vertical	0
Maximum Candela at 80 degrees Vertical	5818.56
Downward Total Efficiency	68.8%

Flux Distribution

	Lumens	Percent of Lamp
Downward Street Side	39555.9	34.4
Downward House Side	39555.9	34.4
Downward Total	79111.89	68.8
Upward Street Side	0.7	.0
Upward House Side	0.63	.0
Upward Total	1.33	.0
Total Flux	79113.2	68.8